



The Tennessee Turner

June 2010

Volume XXIII, Issue 6

Inside This Issue:

President's message	1
Tuesday June 1 Meeting	2
Saturday Turn In	2
Flood Cleanup	2
2010 Schedule	2
Minutes of Meeting	3
May Demonstrator	3
Instant Gallery	3-4
Turn for the Troops	4
TN Art League	4
Turning Southern Style	4
TAW Symposium	5
Taca Craft Fair	5
Jim Greenwood Demo	5
Woodworking Links	5
TAW survey results	6
From the Editor	7
Classifieds	7

Important dates to remember:

June Meeting – June 1
Saturday Turn In – June 5
TAW Symposium –
Jan 28 - 29, 2011

President's Message

When you receive this, the TAW will be working on getting prepared for Richard Raffan's visit to Middle Tennessee! He is making what he called his "last swing" through the rest of North America. We are pretty lucky to be included and to have him here for an entire week!

Richard will be arriving on the 23rd to spend a 3 days at Woodcraft, then do a full day with one of our members and then perform a full day demo for the TAW membership and guests on May 28th. The full day demo will be held at the Tennessee Baptist Children's Home beginning at 9:00 AM - the cost is \$35.00 plus lunch. Richard has asked that you bring your books that he has written if you would like to follow along as he demonstrates and you may even get him to sign an autograph for you as well!

The recent storms and flooding have given us plenty a reason to be thankful. At the time of me writing this message, I have not heard of any club member who sustained significant flood damage which is surprising; since so many were affected by the unexpected rising waters. If you sustained damage and need a hand, please let us know as there are many within our organization that can step up and lend a hand to assist in your clean-up effort.

As we head into the Summer we need to be aware of the heat and how it can sneak up on you! I recently spent an afternoon using the chainsaw in my driveway. After 1 1/2 hours of processing some cherry, I found myself drenched with sweat and just a little bit more fatigued than usual!

I also realized that the sun was focused on the back of my neck - a little too focused on my neck I have to say! So, lots of water and sunscreen are indeed a must for being out there for any amount of time!

I am looking forward to seeing you at the Richard Raffan demo on the 28th! Remember to bring your Raffan books, if you have them!

Ray

Club Meeting–Tuesday June 1



Barry Werner, the June demonstrator, has been turning for 5 years, having first been inspired by a gallery show that included Ben Pho's and John Jordan's works. During the show Barry attended a talk by John, during which John talked about turning green wood.

Having done some furniture building and repair, Barry questioned John's green wood assertions. Thankfully, rather than throwing Barry out, John kindly referred him to TAW and someone named Ray Sandusky. Five years, only five stitches, and three lathes later, here we are today...

Barry won a scholarship to John C. Campbell Folk School, attending a "Beyond Basic Bowls" class by Mark Gardner. Mark has demonstrated at the AAW Symposium, is featured in the book "New Masters of Woodturning", and as it turns out, was mentored by and has assisted in classes taught by John Jordan. John's web site includes a picture of Mark standing beside a chalkboard with the statement "The answer is sharpen your tool. What's your question?"

The demonstration will include making small hollow forms (with 3/8" openings!), with various surface treatments, including carving, texturing, and dying. We will touch on making handled bowls, and sharpening carving tools.

Saturday Turn-In

The next Saturday Turn-In will be **June 5** at the TBCH workshop from 8:00 am – 1:00 pm. If you need help with a project or sharpening a tool come by and someone will be there to help you.

Flood Cleanup

If you need help cleaning up after the flood contact Denny Dobbs. He has a plant enzyme based mold and bacterial killer. He can be reached at 404-281-5730. You can check the products at the following website www.nzymysys.com.

2010 Tentative Schedule and Calendar of Events

Club Projects

January 28th & 29th, 2011 – 23rd Annual Symposium

Club Meeting Programs

June 1 - Barry Werner – from Mark Gardner session – "Beyond Basic Bowls" (TAW Scholarship Class)

July 6 – Jesse Foster – Frank Penta session – Turning, Detailing & Finishing Platters (TAW Scholarship Class)

Saturday Sessions (8:00 am to 1:00 pm unless otherwise specified)

These sessions are conducted to help with turning issues you may be encountering. Hopefully we will have enough established turners to help each newcomer attending. We want to have the seasoned turners provide guidance on tool sharpening, chucking, proper tool use and any other questions that arise. Please join us. Also, please note we have changed the date for the Saturday sessions from the third Saturday to the first Saturday after the monthly meeting

June 5

July 10

Club Sawdust Trail –We have not had a shop visit in several months and are looking for shops to visit, please volunteer your shop for a Saturday morning visit.

Minutes of the Meeting –May 6

TAW meeting notes May 6, 2010

Ray Sandusky called the meeting to order

We had 39 members present and there were no visitors.

TACA craft fair is this weekend.

Jeff Brockett will resend the revised bylaws out as an attachment.

TAW needs a webmaster

Raffan classes are May 24-29 at Woodcraft.

Turn for the Troops pen kits are available at Woodcraft.

George Anderjack from Tennessee Arts League gave an overview of his organization

May Demonstrator



Jeff Brockett introduced Jim Greenwood, the May demonstrator. Jim demonstrated techniques from the Charles Watson scholarship class he took at John C Campbell.

Instant gallery



Ron Ferriera - small lidded box



Stephen Campbell – Natural edge maple bowl



Barry Werner - carved elm hollow form



Ray Sandusky – black oak hollow form



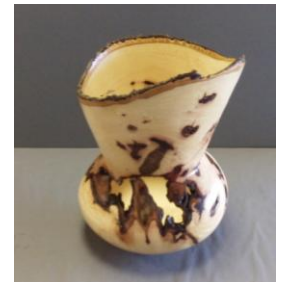
Ray Sandusky – maple hollow form



Ray Sandusky – cherry pencil boxes



Jim Greenwood – Bay Walnut



Jim Greenwood – Hickory vase



Jim Greenwood – Walnut vase



Jim Greenwood – Box elder/cherry hollow form



Jim Greenwood – Walnut bowl/square platter



Monte Richards – pierced maple hollow form



Monte Richards – Red wood burl teapot
Fred Takacs – Hickory Bowl



Fred Takacs – Maple Pot
Ray Curl – sugar maple bowl



Ray Curl – maple bowl
Ron Sanda-ringmaster bowls



Turn for the Troops

The Woodcraft store in Franklin will sponsor Turn for the Troop in 2010. Last year over 3000 pens were turned by various woodturning clubs. Our troops are still in harm's way and appreciate the pens that are provided through the Turn for the Troops project. If you would like to turn some pens that will be given to the Turn for the Troops project please stop by the Woodcraft store in Franklin or come to a TAW meeting and pick up some pen kits. The TAW will be sponsoring some pen turning activities at the Saturday Turn Ins this summer.

Tennessee Art League

The TAW Board has been looking for ways to promote woodturning and to gain local exposure for TAW. As part of that effort, we invited George Anderjack, Executive Director of the Tennessee Art League (TAL), to our last meeting. TAL is a non-profit that was started in Nashville in 1954, and is now located at 808 Broadway, diagonally down from the Frist. As Mr. Anderjack told the club, in his opinion there is no line between "art" and "craft" when both are created skillfully, and that one of TAL's main missions is to encourage and promote the visual arts through changing exhibitions. The opportunities for TAW include:

- an individual or group submittal for a 2-month exhibit in 2011 (as Brenda Stein had last year)
- individual submissions for the Central South Art Exhibit (an annual TAL competition with \$9,000 in prizes for 2010).
- for groups or individuals that are TAL members, submittal for a month-long exhibit in 2011.
- also for TAL members, showing of one piece in the monthly Member's exhibit.

TAL receives great exposure at the monthly Nashville downtown "Art Crawls" that take place on the first Saturday of each month. It is a free tour, (including shuttle busses) of Nashville's art venues, from 6:00PM to 9:00PM. TAL is a great place to start the "Crawl", and everyone is invited!!!

Turning Southern Style XVI

The Georgia Association of Woodturners (GAW), dedicated to providing education, information and organization to those interested in woodturning, will be presenting its annual symposium, "Turning Southern Style XVI". This year's event will again be held at the Unicoi State Park and Lodge near Helen, Georgia, on September 17-19, 2010. GAW sponsors this annual event which features some of the world's leading wood turners and turning artisans.

This year's featured turners include:

J. Paul Fennell, Alan Lacer, and Stephen Hatcher.

Also featured are:

Nick Cook, Johannes Michelsen, Peg Schmid, and Dave Barriger.

For Further Information:

For additional information and pricing, please visit www.gawoodturner.org.

Save the Date

January 28th and 29th, 2011



Tennessee Association of Woodturners
23rd Annual Woodturning Symposium
Radisson Opryland Hotel
Nashville, Tennessee
Molly Winton
Michael Mocho
Bill Grumbine
Stuart Batty

Detail available at www.tnwoodturners.org

TACA Craft Fair



Jim Greenwood –Club Demo



Woodworking Links

American Association of Woodturners

www.woodturner.org

Arrowmont School of Arts & Crafts, Gatlinburg, TN, www.arrowmont.org 1-865-436-5860

Duck River Woodturners Club, Columbia, TN
www.duckriverwoodturners.com

Tri-State Woodturners Club, Chattanooga, TN
www.tristatewoodturners.org

Woodturning Resources

www.woodcentral.com

John C Campbell Folk School, Brasstown, NC

www.folkschool.org

Appalachian Center for Crafts, Smithville, TN

www.tntech.edu/craftcenter

Wood Central

www.woodcentral.com

Sawmill Creek

www.sawmillcreek.org

Woodcraft

www.woodcraft.com

Got Wood?

www.turningblanks.net

John Jordan

www.johnjordanwoodturning.com

Tennessee Association of Woodturners 2010 Survey Results

How many years have you been turning?

BY RANK

YEARS	MEMBERS
5-10	22
1	9
4	8
2	7
10-20	7
5	6
over 20	4
3	2

My current challenge or interest is:

BY RANK

1 O. **31** finishing my work by eliminating torn surface, sanding marks, tool marks, flat or high spots

1 P. **31** embellishing my work with techniques such as: burned rings, scorching, texturing, painting, wood burning, inlay, or carving

2 J. **30** choosing suitable wood, cutting, and processing the wood (green and dry) into turning blanks

Included would be learning what part of a tree yields bowls, platters, vessels, etc.

3 N. **29** how to achieve a pleasing shape for platters, bowls, boxes, and vessels

4 I. **26** alternative methods of chucking: faceplates, screw chuck, friction and jam chucks, or cole jaws

5 D. **25** learning the names of different cuts and how to control the tool throughout the cuts

5 L. **25** drying a green wood turning to prevent cracks from occurring

6 M. **24** turning hollow forms

6 Q. **24** choosing and applying a suitable finish for utilitarian use and for work to be displayed

7 H. **22** using a skew chisel

8 G. **21** choosing the correct tool(s) for turning different items

9 S. **20** photographing my work - Included would be preparing a photo tent, lighting, camera use, etc.

9 K. **20** methods for preserving freshly cut green wood to prevent cracks

9 E. **20** sharpening my tools

10 F. **19** making turning tools for regular use and hollowing

11 C. **18** safely holding the work for unusual or delicate cuts

12 R. **12** displaying and marketing my work

13 B. **10** basics of safely holding the wood on the lathe between centers

14 A. **4** determining which lathe and basic turning accessories to purchase

Please list any other needs you may have.

- coring system
- spindle turning for architectural use
- carving
- identifying wood by grain, color, etc.
- candle sticks - an easy way to bore the tapered hole for the candle (I've just been drilling with a 3/4" bit.)

Check specific projects you would like to see demonstrated.

BY RANK

1 B. **31** lidded boxes

2 H. **28** eccentric or off-center turning

3 J. **26** surface embellishments

4 F. **25** hollow forms

5 C. **22** bowls

6 A. **21** segmented cutting, assembly, and turning

7 D. **19** vases

8 E. **19** platters

9 I. **18** ornaments or finials

10 K. **18** spheres or eggs

11 G. **14** goblets

12 L. **9** furniture spindles

Please list any other projects.

- rose engine demonstration (two requests)
- Has anyone built the rose engine for ornamental turning as described by Jon Magill in American Woodturner, Spring 2007, Volume 22, No.1? I would enjoy seeing one in operation and examples of what it can do.

One comment:

I work out of town and cannot attend Tuesday meetings.

From the Editor

Articles are due **Friday June 18** for the July newsletter and should be submitted to woodwackerjeff@aol.com .

Members Projects - If you have a woodturning project that you would like to showcase to our club members, you can send me detailed information about your project with pictures.

Members Questions and Answers - Members are asked to submit wood turning, finishing, and tool questions for our resident experts to answer. There are no dumb questions, someone else in the club may have had the same question.

Classified ads for woodworking related items are free to members. Send detailed information with pictures.

Wood to turn – Do you have wood, need wood or know about wood that is available for turning? Let me know and I will pass it along

Classifieds

WOOD NEEDED - Looking for thick 4" or more dried wood for making spheres. even small chunks are ok. Will buy or trade. Pat @ 615.886.7100 – Pat Matranga

FOR SALE DELTA LATHE \$783.00, 12" SWING 48" BED (seasoned and milled cast), VARIABLE SPEED BELT DRIVE, ON STAND. Made in Pitts., Pa. USA. Cat. # 46-541P. Contact - Fred Takacs 615 876-0575

LATHE FOR SALE: I've run out of room in my garage. A classic Rockwell/Delta 12"X36" lathe, #2 Morse tapers, made in USA, new Emerson motor, mounted on casters. Runs well. \$100. Contact - Barry Werner (615) 264-0680 or barrywerner@bellsouth.net



Email Club Questions to:
info@tnwoodturners.org
pres@tnwoodturners.org
or Mail to:
TAW
P.O. Box 158296
Nashville, TN 37215

Check out the Website!
www.tnwoodturners.org

Tennessee Association of Woodturners

Board of Directors

President -	Ray Sandusky –	rsandusky@comcast.net
Vice President -	Mike Zinser –	mike.zinser@yahoo.com
Treasurer -	David Sapp –	sappoman@comcast.net
Sec/Newsletter -	Jeff Brockett –	woodwackerjeff@aol.com
Librarian	Bill Tucker -	bill.tucker@att.net
Director -	Myra Orton –	myraorton@bellsouth.net
Director -	Lou Mineweaser	mine@tds.net
Director -	Phil Stoner –	phil@mightyoakstudio.com
Director -	Barry Werner	barrywerner@bellsouth.net
Director	Stephen Campbell	steveanddonnac@comcast.net



The Tennessee Association of Woodturners is a local chapter of the American Association of Woodturners. Our purpose is to provide a meeting place for local turners to share ideas and techniques and to educate the general public regarding the art of turning. The TAW meets the first Tuesday of each month at the Tennessee Baptist Children's Home, off of Franklin Road in Brentwood, TN and periodically sponsors local exhibitions and demonstrations as well as an annual symposium